

^6 Sculptural - Textural Glazes on CC535D Dark Chocolate Clay



GLW02 #FS
Blue Jeans



GLW03 #FS
Avocado Ice



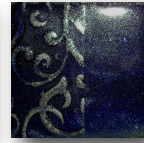
GLW04
Peanut Ash
Matte



GLW06
Liquid Luster
Bronze



GLW08 #FS
Copper Patina



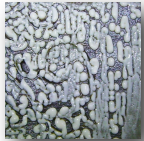
GLW10 #FS
Midnight Blue



GLW12 #FS
Eggshell



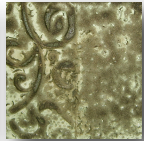
GLW13 #FS
Sage Green



GLW15
Jujube



GLW16
Faux Ash
Teal



GLW17
Turquoise
Lagoon



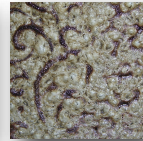
GLW19 #FS
Moss Thicket



GLW21 #FS
Raw Honey



GLW22
Rusty Nails



GLW23
White Froth



GLW25 #FS
Aqua
Gemstone



GLW26 #FS
Mustard
Wood Ash



GLW27 #FS
Emerald
Wood Ash



GLW28 #FS
Sapphire
Wood Ash



GLW30 #FS
Cinnamon



GLW31
Dry Rust



GLW32 #FS
Latte



GLW34 #FS
Ohata



GLW36 #FS
NW Woods



GLW37 #FS
Pure White
Matte



GLW39 #FS
Vanilla Cream
Matte



GLW40 #FS
Golden
Raspberry



GLW41 #FS
Cool Lime
Matte



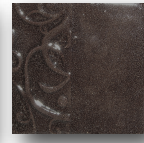
GLW42 #FS
Blueberry
Matte



GLW43 #FS
Bright Blue
Matte



GLW44 #FS
Black Matte



GLW45 #FS
Plum Black



GLW46 #FS
Northern
Lights



GLW47 #FS
Kalamata



GLW48
Cicada
Crackle



GLW49
Peking Blue
Crackle



GLW50
Dragon Scale
Crackle



GLW51
Wu Blue
Crackle



GLW53
Yangtze Amber
Crackle



GLW54 #FS
Paprika
Matte



GLW55 #FS
Turmeric
Matte



GLW56 #FS
Chartreuse
Matte



GLW57 #FS
Dusty Blue
Matte

CC535D

Dark Chocolate Clay Body
The intense color of this clay body may alter / react with your glazes in unexpected ways. You may need to increase your coverage, or may find that semi-transparent glaze colors disappear. Some glazes do not like it. Always test both your glaze and application.



- Cone 6
- Electric Firing
- Non-Toxic
- Lead- Free
- * #FS Food Safe